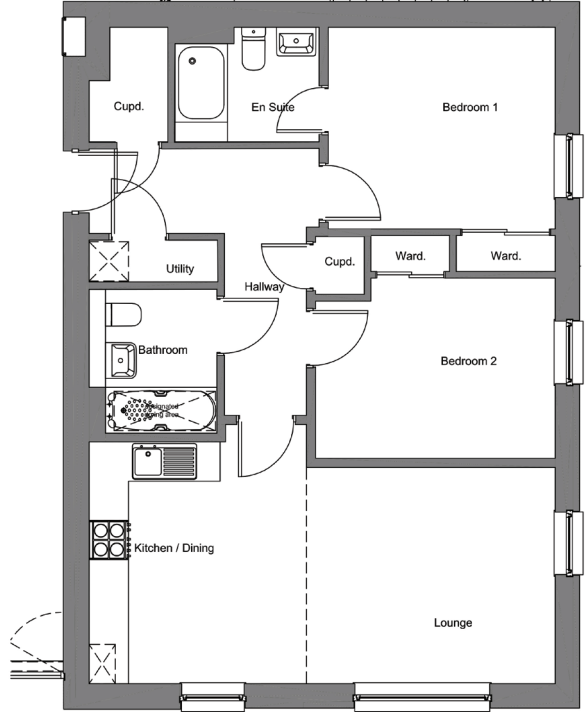




APARTMENT TYPES

MARCHSTONE POINT



THE GILCOMSTON A / 2 BEDROOM EN-SUITE / BLOCK B



THE GILCOMSTON A
2 BEDROOM EN-SUITE

Plot 28, 29 First Floor
31, 32 Second Floor
34, 35 Third Floor

(SIZE IN MM)

Living Room	3796 x 3304
Kitchen	3695 x 3318
Utility	1962 x 638
Bedroom 1	3464 x 3082
En-suite	2200 x 1750
Bedroom 2	3657 x 2753
Bathroom	2215 x 1950