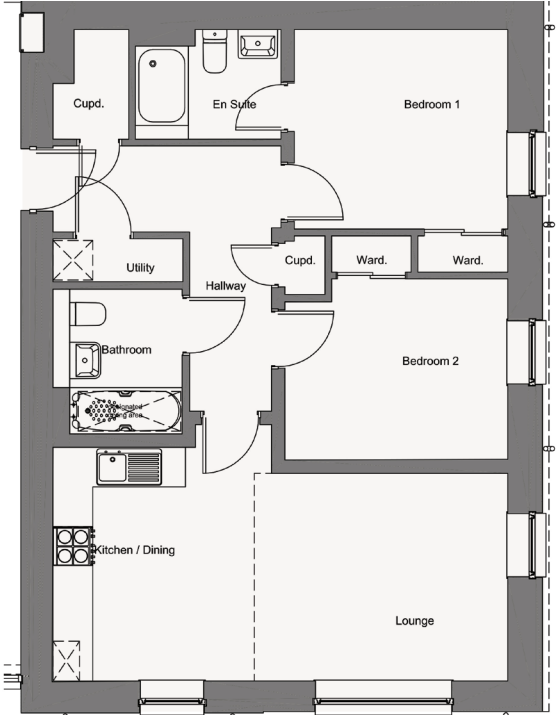




APARTMENT TYPES

MARCHSTONE POINT



THE GILCOMSTON B / 2 BEDROOM EN-SUITE / BLOCK B



(SIZE IN MM)

Living Room	3829 x 3138
Kitchen	3533 x 3041
Utility	1962 x 650
Bedroom 1	3225 x 3017
En-suite	2200 x 1658
Bedroom 2	3368 x 2740
Bathroom	2188 x 1950